

# 6000 Servo Tank Gauge Spare Parts

## Maintenance & Spare Parts



Name

Company

Tel:

Fax:

E-mail:

Date:

Date Parts Required:

Delivery Address:

Billing Address:

End User Information:

(Name, Company, City, State, Zip)

Purchase Order Number:

Shipping Instructions:

Special Instructions:

Ordering Instructions:

When ordering spare parts refer to the diagram for item numbers. Complete this form in full and then fax-back to (770) 810-9456, or contact your Varec local representative:

#	Part #	Description	Qty
11	017803-0030	O-ring, display cover, NBR, D118mm, d3.5mm	
11	70106018	O-ring, calibration window, CR, D60mm, d3mm	
11	017803-0036	O-ring, calibration window, FKM, D60mm, d3mm	
11	017803-0033	O-ring, calibration window, NBR, D60mm, d3mm	
11	56004518	O-ring, calibration window, PTFE, D60mm, d3mm	
11	017803-0041	O-ring, calibration window, silicone, D60mm, d3mm	
11	70106019	O-ring, cover drum housing Alu, CR, D120mm, d3mm	
11	70106020	O-ring, cover drum housing Alu, FKM, D120mm, d3mm	
11	017803-0034	O-ring, cover drum housing Alu, NBR, D120mm, d3mm	
11	56004345	O-ring, cover drum housing Alu, PTFE, D120mm, d3mm	
11	70106021	O-ring, cover drum housing Alu, silicone, D120mm, d3mm	
11	017803-0066	O-ring, cover drum housing SS, FKM, D158mm, d3.5mm	
11	017803-0035	O-ring, cover drum housing SS, silicone, D158mm, d3.5mm	
11	70109105	O-ring, cover, drum housing SS, NBR, D158mm, d3.5mm	
11	70109106	O-ring, drum housing cover SS, CR, D158mm, d3.5mm	
11	70109107	O-ring, drum housing cover SS, PFA, D158mm, d3.5mm	
11	017803-0040	O-ring, terminal cover, NBR, D118mm, d3.5mm	
11	71070894	PTFE packing+ring, calibr. window, Zone0	
21	017800-0111	Cover, display module, Aluminium	
21	56004295	Calibration window, Alu (N6005-1/4) 4x bolt M6x14, washer	
21	56004296	Calibration window, SS (N6005-2/5), 6x bolt M6x14, washer	
21	56004297	Calibration window, SS, (N6005-6), 6x bolt M6x18, washer	
21	71070909	Calibration window, SS, Zone0 (N6005-2/5/6), 6x bolt M6x22, washer	
21	017800-0113	Cover drum housing, Alu (6005-1/4), 6x bolt M6-18, 6x washer	
21	56004307	Cover drum housing, St/St (6005-5/6)	
21	56004308	Cover, drum housing, SS (N6005-2)	
21	017800-0112	Cover, terminal box, Aluminum	
31	70103942	POW-6, HV, Ex i AC85-264V	
31	70103940	POW-6, HV, non Ex I AC85-264V	
31	70103943	POW-6, LV, Ex i DC20-60V,AC20-55V	
31	70103941	POW-6, LV, non Ex i DC20-60V,AC20-55V	
32	70103937	TCB-6 CPU module (upgrade of TCB-4) Note! Please specify the following for the CPU firmware chip: remote communication version; display type; W&M or non-W&M; OSP or non-OSP	
33	56004355	ENRAF BPM communication module, COM-3	
33	52013649	Enraf BPM Upgrade Kit	
33	56004485	HART active communication module, COM-6	
33	70106039	HART Active Output Upgrade Kit	
33	56004484	HART passive communication module, COM-6	
33	52013651	HART Passive Output Upgrade Kit	
33	56004409	Mark/Space communication module	
33	52013658	Mark/Space Upgrade Kit	
33	71086763	Modbus module RS485, COM-5	
33	70106270	MODBUS RS485 Upgrade Kit	
33	017800-0005	V1 Communication module, COM-1	
33	52013661	V1 Upgrade Kit	
33	56004534	WM550 Communication module with arrestor	
33	52013662	WM550 Upgrade Kit	
34	017800-0007	Alarm output, 2x contact, I/O 3	
34	70109108	Alarm output, 2x contact, I/O 3, TÜV OSP	
34	52013654	I/O 3 Upgrade Kit	
35	017800-0017	4-20mA Output, I/O 5, 2-channel	
35	52013656	I/O 5 Upgrade Kit	
36	56004356	EXI HART communication module, COM-4	
37	56004442	OPE Input/Contact out + spot temp.+ carrier	
37	56004441	OPE Input/Contact out with carrier	
37	70106035	Operation Input/Contact Output Ex d Temperature T-AMP Upgrade Kit	
37	70106032	Operation Input/Contact Output Upgrade Kit	
37	56004490	Spot Temperature Input T-AMP Upgrade Kit	
37	70106027	Spot Temperature T-AMP Ex ia carrier	
37	56004491	Spot Temperature T-AMP with carrier	

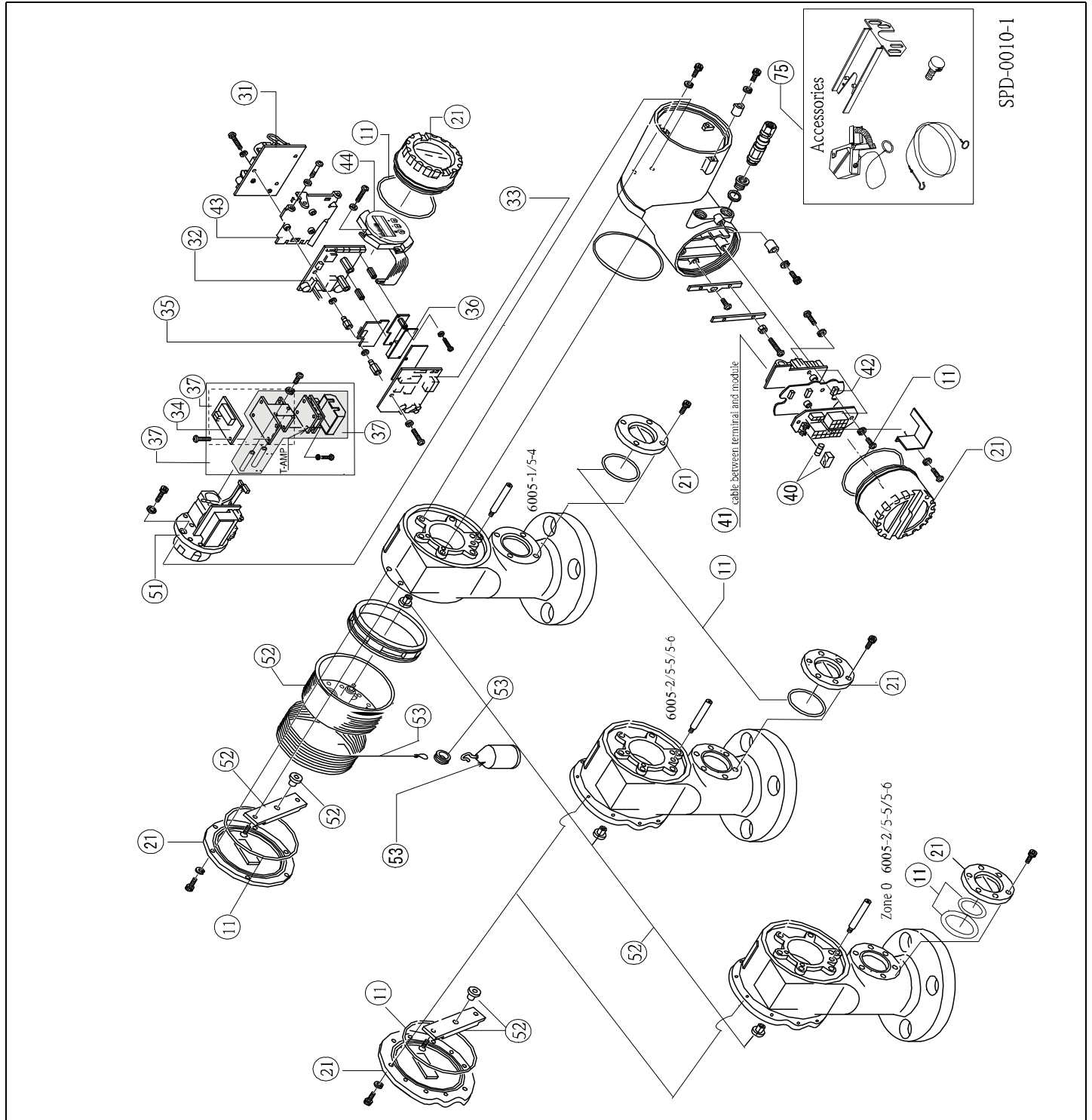
Continued...

# 6000 Servo Tank Gauge Spare Parts

Draw #	Part #	Description	#
40	70106499	Fuse 20-62VDC T3A15, 10 pcs.	
40	70106498	Fuse 250VAC T2A50, 10 pcs.	
40	70106500	Fuse cover 10 sets	
41	52013652	CPU I/O 3 module cable	
41	70106033	CPU, T-AMP Ex d module cable	
41	70105995	CPU, T-AMP Ex ia module cable	
41	70106036	Terminal Block COM-4 module cable	
41	52013648	Terminal Block ENRAF BPM module cable	
41	70106037	Terminal Block HART active module cable	
41	52013650	Terminal Block HART Module cable (passive)	
41	52013653	Terminal Block I/O 3 module cable	
41	52013655	Terminal Block I/O 5 module cable	
41	52013657	Terminal Block Mark Space module cable	
41	70106034	Terminal Block T-AMP Ex d module cable	
41	70105996	Terminal Block T-AMP Ex ia module cable	
41	52013660	Terminal Block V1 COM-1 /RS485/BPM module cable	
42	56004508	Terminal, noise filter, Exd	
42	56004509	Terminal, noise filter, Exd(ia)	
43	017800-0015	PCB CPU Carrier set complete, spacer	
44	70103938	Display and operation module type II (6005 STG: software V4.27 or later. 4560SGM: software V1.94 or later.)	
44	017801-0010	Display module, 3 Key optical (4560SGM: software V1.92 or earlier.)	
44	017800-0021	Display module, 3 Key optical (6005 STG: software before V4.27. 4560SGM: software V1.92 or earlier.)	
45	70103944	Detector unit - Alu/TCC-3 v1 (software V4.27 or later)	
45	017800-0043	Detector unit - Alu/TCC-3 (software V4.24 or before)	
52	017800-0221	Bearing, wire drum bracket, PTFE, 2x	
52	56004523	Wire Drum + 316SS Measuring Wire & Ring (28M)	
52	71114404	Wire Drum + 316SS Measuring Wire & Ring (28M), CR O-ring	
52	71136789	Wire Drum + 316SS Measuring Wire & Ring (28M), FFKM O-ring	
52	71114405	Wire Drum + 316SS Measuring Wire & Ring (28M), silicone O-ring	
52	71133077	Wire Drum + 316SS Measuring Wire & Ring (36M)	
52	71133079	Wire Drum + 316SS Measuring Wire & Ring (36M), CR O-ring	
52	71136790	Wire Drum + 316SS Measuring Wire & Ring (36M), FFKM O-ring	
52	71133078	Wire Drum + 316SS Measuring Wire & Ring (36M), Silicone O-ring	
52	71134099	Wire Drum + 316SS Measuring Wire & Ring (47M)	
52	71134100	Wire Drum + 316SS Measuring Wire & Ring (47M), CR O-ring	
52	71134101	Wire Drum + 316SS Measuring Wire & Ring (47M), Silicone O-ring	
52	56004520	Wire drum + AlloyC Wire & Ring (16m)	
52	71114408	Wire drum + AlloyC Wire & Ring (16m), CR O-ring	
52	71114409	Wire drum + AlloyC Wire & Ring (16m), Silicone O-ring	
52	56004526	Wire drum bracket SS, Teflon coated, 2x PTFE bushing, 2x SS screw	
52	56004525	Wire drum bracket, Alu, 2x PTFE bushing, 2x SS screw	
52	56004527	Wire drum bracket, SS, 2x PTFE bushing, 2x SS screw	
52	56004524	Wire drum, + PFA Wire & Ring (10/16m)	
52	71114406	Wire drum, + PFA Wire & Ring (10/16m), CR O-ring	
52	71114407	Wire drum, + PFA Wire & Ring (10/16m), Silicone O-ring	
53	017800-0241	10x Wire Ring, 316SS	
53	017800-0243	10x Wire ring, AlloyC	
53	017800-0242	10x Wire ring, PTFE coated	
53	70104684	Displacer, 110mm, conical, 316SS, high pressure	
53	017800-0267	Displacer, ring, 110mm, conical, 316SS, low pressure	
53	71134068	Displacer, ring, 110mm, cylindrical, 316SS, Zone0	
53	71134069	Displacer, ring, 30mm, cylindrical, 316SS, Zone0	
53	71134070	Displacer, ring, 40mm, cylindrical, 316SS, Zone0	
53	017800-0253	Displacer, ring, 50mm, conical, PTFE, with 316SS PTFE-coated connection ring	
53	017800-0252	Displacer, ring, 50mm, cylindrical, 316SS, Standard	
53	56004339	Displacer, ring, 50mm, cylindrical, 316SS, guide rings	
53	71083820	Displacer, ring, 50mm, cylindrical, 316SS, Zone0	
53	71134071	Displacer, ring, 50mm, cylindrical, 316SS, Zone0	
53	017800-0271	Displacer, ring, 50mm, cylindrical, AlloyC	
53	71134072	Displacer, ring, 50mm, cylindrical, AlloyC, Zone0	
53	70105994	Displacer, ring, 50mm, cylindrical, PTFE, with 316SS-PTFE coated connection ring	
53	017800-0263	Displacer, ring, 70mm, conical, 316SS, Nmi	
53	71134067	Displacer, ring, 70mm, cylindrical, 316SS, Zone0	
53	56004914	Measuring Wire & Ring, 16m, d=0.2mm, AlloyC	
53	56004912	Measuring Wire & Ring, 16m, d=0.4mm, PTFE	
53	71114403	Measuring Wire & Ring, 28m, d=0.15mm, 316SS	
53	56004255	Set 5x 16m measuring wire 0.2mm & ring Alloy C	
53	56004256	Set 5x 16m measuring wire 0.4mm & ring PTFE	

# 6000 Servo Tank Gauge Spare Parts

Draw #	Part #	Description	#
53	56004257	Set 5x 28m measuring wire 0.15mm & ring 316SS	
53	71134096	Wire hook, SS400, L=100, with bolt, nut, washer.	
53	71134095	Wire hook, SUS304, L=100, with bolt, nut, washer.	
75	71067825	Calibration Weight 50 gram Test Kit for N6005	



SPD-0010-I

**Corporate Headquarters**  
 5834 Peachtree Corners East  
 Norcross (Atlanta), GA 30092  
 USA  
 Tel: +1 (770) 447-9202  
 Toll Free: +1 (866) 698-2732  
 Fax: +1 (770) 662-8939

**Houston**  
 5151 San Felipe  
 Sage Plaza, Suite 1100  
 Houston, Texas 77056  
 USA  
 Tel: (281) 498-9202  
 Fax: (281) 498-0183

**Asia Pacific**  
 Level 8, 91 William St.  
 Melbourne  
 Victoria 3000  
 Australia  
 Tel: +61 3 8623 6400  
 Fax: +61 3 8623 6401

**Europe**  
 Suite 120, 94 London  
 Road  
 Headington, Oxford  
 Oxfordshire, OX3 9FN  
 United Kingdom  
 Tel: 0800 044 5704  
 Fax: 0844 544 1874

**Authorized Representative**

If no official representative is listed here, please visit [www.varec.com](http://www.varec.com) to find your local representative.  
 2010 © Varec, Inc. All Rights Reserved. This document is for information purposes only. Varec, Inc. makes no warranties, express or implied, in this summary.  
 The names of actual companies and products mentioned herein may be the trademarks of their respective owners.

Document Code  
 APM025GVEN0912