

4110 HART® Level Encoder

Maintenance & Spare Parts



Name

Company

Tel:

Fax:

E-mail:

Date:

Date Parts Required:

Delivery Address:

Billing Address:

End User Information:

(Name, Company, City, State, Zip)

Purchase Order Number:

Shipping Instructions:

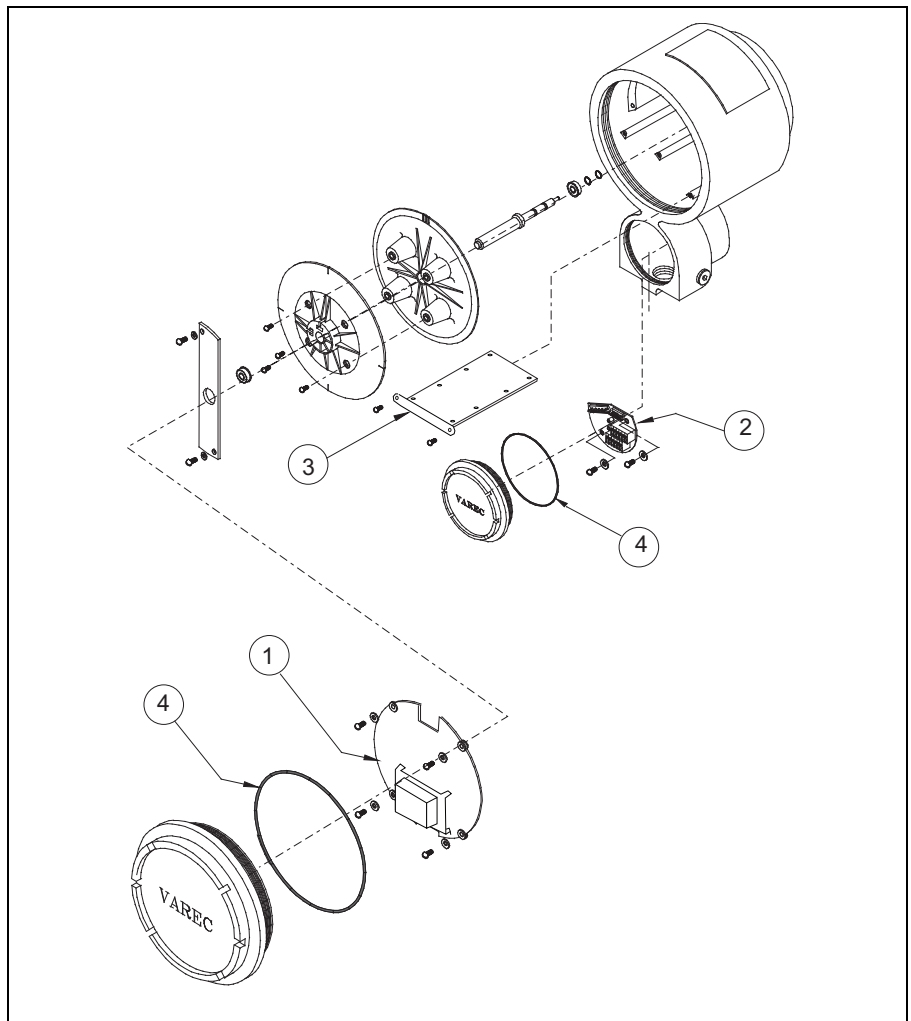
Special Instructions:

Ordering Instructions:

When ordering spare parts refer to the diagram for item numbers. Complete this form in full and then fax-back to (770) 810-9456, or contact your Varec local representative:

| Item | Part No. | Description | Quantity |
|------|--------------|---|----------|
| 1 | 08-09208 | Encoder CPU Board | |
| 2 | 08-09216* | Terminal Board Assy | |
| 3 | 08-09220* | Sensor Board Assy | |
| 4 | 13-11569* | O-Ring Kit | |
| | 13-05956-102 | Adapter kit for mounting to L&J 92514, 92020 and 92030 gauges | |
| | 13-05956-202 | Adapter kit for mounting to L&J 92006 and Whessoe Varec 2006, 2026, and 2036 gauges | |

Note! * Recommended spare parts to keep in stock per 10 instruments installed
Note! All items not listed here require factory servicing due to the critical alignments required when replacing spare parts - Please consult the factory.



www.varec.com